

COMPANY PROFILE



MMB TECHNOLOGIES

 www.mmbtechnologies.com

 info@mmbtechnologies.com

 Office# 204 Ashrafi Heights
Main Market Gulberg Lahore

INNOVATIVE & COLLABORATIVE

Pioneering innovation, powering your success. Explore the future of technology with us.

ABOUT OUR COMPANY



A BRIEF STORY ABOUT THE COMPANY

Incepted in 2014, MMB Technologies embarked on its journey as a humble tech startup with a grand vision. With unwavering dedication and a relentless pursuit of excellence, we've evolved into a leading force in the technology industry. Specializing in both software and hardware solutions, our story is one of innovation, resilience, and a commitment to shaping a brighter, tech-driven future for businesses worldwide.

BRINGING IDEAS AND INNOVATION
TO LIFE THROUGH TECHNOLOGY



VISION

To be the forefront of technological innovation, catalyzing progress across industries. We aspire to be the go-to partner for businesses seeking transformative software and hardware solutions, contributing to a more connected, efficient, and sustainable world.

MISSION

At MMB Technologies, our mission is to relentlessly pursue excellence in crafting cutting-edge software and hardware solutions. We are dedicated to empowering our clients with innovative technology, fostering strategic collaborations, and exceeding expectations. By delivering exceptional value, we aim to drive digital evolution and ensure our clients' success in an ever-evolving technological landscape.

KEY FACTORS

INNOVATION

Innovation is at the core of MMB Technologies' DNA. We believe that staying at the forefront of technological advancements is essential for our success and that of our clients.

INFRASTRUCTURE

At MMB Technologies, we recognize that a robust infrastructure is the foundation upon which our success and service excellence are built. Our state-of-the-art facilities, advanced technology systems, and robust logistical framework ensure that our daily operations run smoothly.

CREATIVITY

At MMB Technologies, we believe that creativity is the key to pushing boundaries and achieving remarkable results in the world of technology.

WWW.MMBTECHNOLOGIES.COM



PROBLEMS

A BRIEF STORY ABOUT THE PROBLEMS

In the fast-paced realm of technology, one of the most persistent challenges MMB Technologies encounters is keeping up with rapid advancements. As we strive to deliver cutting-edge solutions to our clients, the ever-accelerating pace of innovation presents a dual-edged sword.

THE SOCIETY

The societal challenge for MMB Technologies lies in navigating the complex landscape of ethical dilemmas, environmental sustainability, and digital divides, all while maintaining innovation and social responsibility at the forefront of our mission.

THE PANDEMIC

The pandemic has disrupted traditional business models, compelling MMB Technologies to adapt rapidly to remote work, supply chain disruptions, and increased cybersecurity threats, while continuing to provide essential tech solutions to our clients.

THE ENVIRONMENT

Environmental concerns demand our attention as MMB Technologies strives for sustainable practices and eco-friendly solutions, aiming to reduce our carbon footprint and minimize adverse impacts on our planet.

THE INFRASTRUCTURE

Infrastructure challenges, such as upgrading and maintaining our technological framework, are vital to ensure seamless operations and support our innovative solutions at MMB Technologies.

SOLUTIONS

A BRIEF STORY ABOUT THE SOLUTIONS

In response to the challenges we've faced, MMB Technologies has embarked on a journey of proactive problem-solving. We're implementing a robust set of solutions that embrace ethical guidelines, enhance pandemic resilience, and drive environmental sustainability. These initiatives reflect our commitment to innovation, responsibility, and the well-being of both society and our planet.

- **MARKET DRIVEN BASIC IMPLEMENTATION**

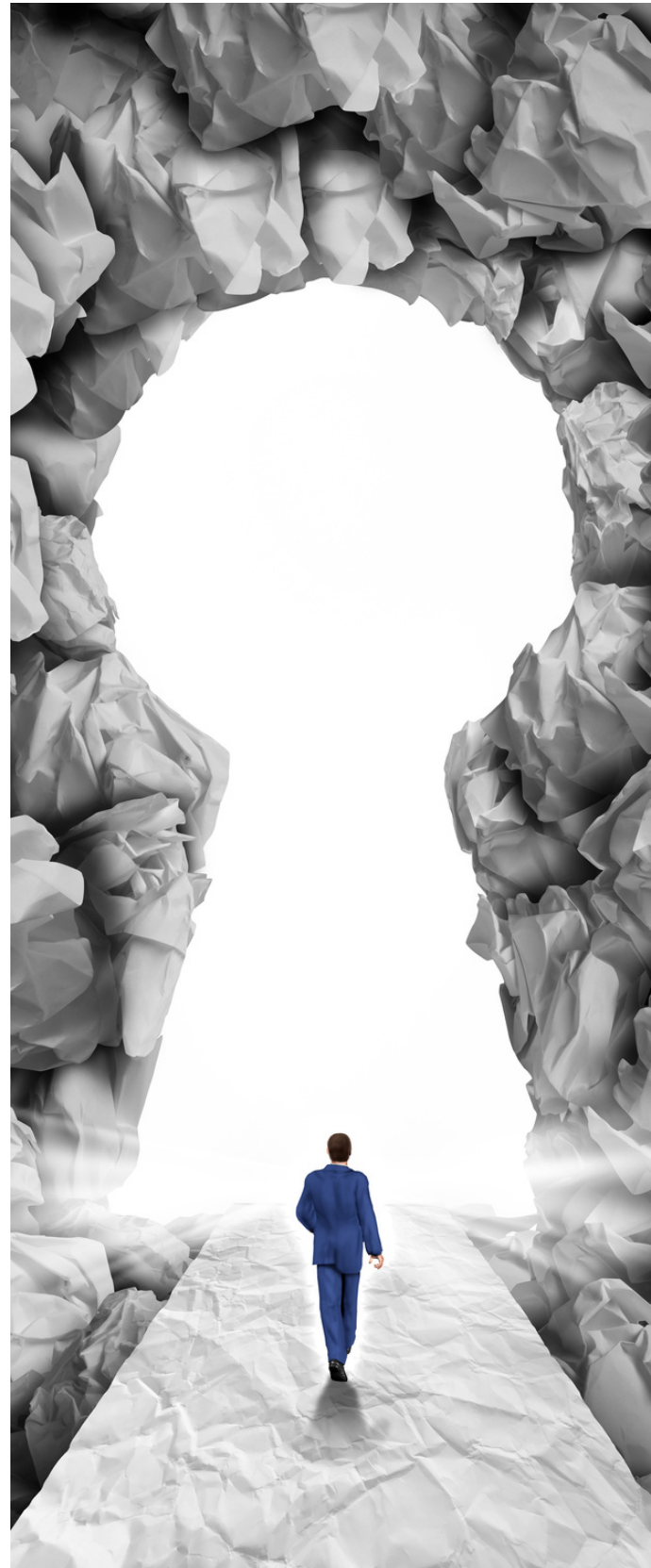
To address the evolving needs of our clients and stay competitive, MMB Technologies is shifting towards a market-driven basic implementation strategy. This approach involves closely monitoring market trends, swiftly adapting our products and services, and prioritizing customer feedback to ensure we deliver solutions that directly align with market demands.

- **SEM IMPLEMENTATION**

MMB Technologies is embracing SEM to boost our online visibility and reach a broader audience. By strategically leveraging paid search advertising and optimizing our online presence, we aim to enhance brand recognition, drive targeted traffic, and capture new opportunities in the digital landscape.

- **DECREASE INDUSTRY GAP**

At MMB Technologies, we are dedicated to closing the industry gap by fostering innovation, knowledge sharing, and collaboration. We're committed to nurturing talent through training and development programs, facilitating partnerships with educational institutions, and actively participating in industry networks.



SWOT ANALYSIS



WHERE INNOVATION
MEETS SUCCESS!



STRENGTH

- Innovative Mindset
- Recently Built Platform & Website
- Good Quality of After Sales
- Very Relate to Society 5.0

WEAKNESSES

- Long Term Investment
- Product Insurance Costs are Raising
- High Level of Third Party Turnover
Due To Price Competition

OPPORTUNITIES

- New Market Target
- Public Awareness
- New Public Infrastructure
- 5g Connection Implementation

THREATS

- High Level of Employee Turn Over
- New Competitors From Other Country
- Covid-19 Pandemics Situation

4P'S MARKETING TABLE

PROMOTION

- Online Marketing
- Influencer
- Direct Marketing
- Advertising
- Endorsing

PLACE

- Market Coverage
- Market Exposure
- Channels
- Inventory
- Supply Chain

PRODUCT

- Quality
- Features
- Branding
- Warranties

PRICE

- Discounts
- Allowance
- Payments Term



PRODUCT OVERVIEW



A BRIEF STORY ABOUT THE PRODUCT

At MMB Technologies, our journey began with a vision to empower businesses through technology. Over the years, this vision has manifested into a diverse portfolio of cutting-edge products and services designed to meet the ever-evolving needs of our clients. From innovative software solutions that streamline operations to state-of-the-art hardware technologies that enhance connectivity, our offerings are a testament to our commitment to excellence and innovation.



PRODUCT PORTFOLIO

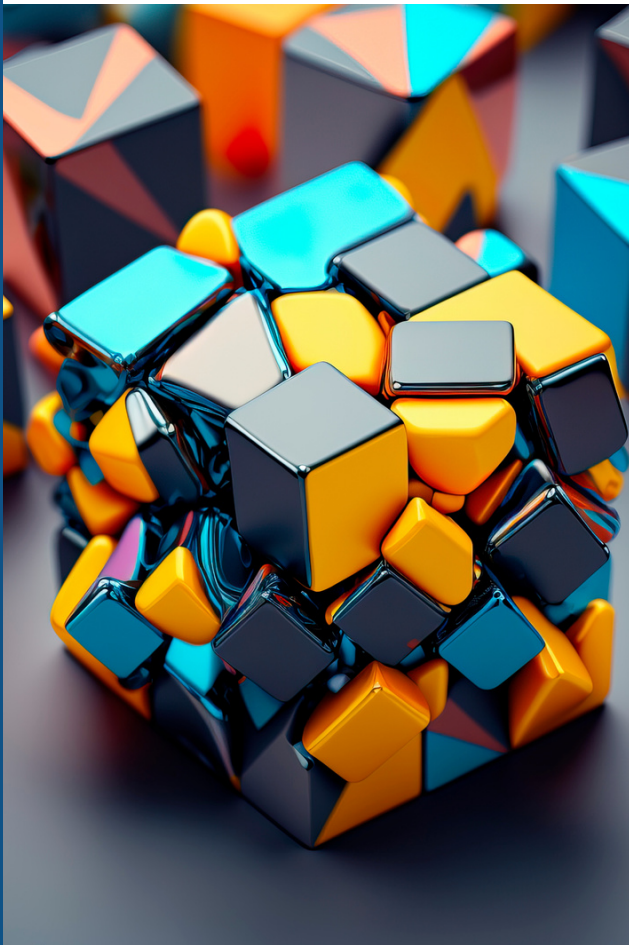


A BRIEF STORY ABOUT THE PORTFOLIO

MMB Technologies' product portfolio is a dynamic spectrum of innovation, designed to empower businesses across diverse industries. From cutting-edge software solutions that drive efficiency to state-of-the-art hardware technologies that enable connectivity, our range embodies versatility, excellence, and a relentless commitment to pushing technological boundaries.

MMB TECHNOLOGIES

WWW.MMBTECHNOLOGIES.COM



WHERE INNOVATION MEETS SUCCESS

HARDWARE

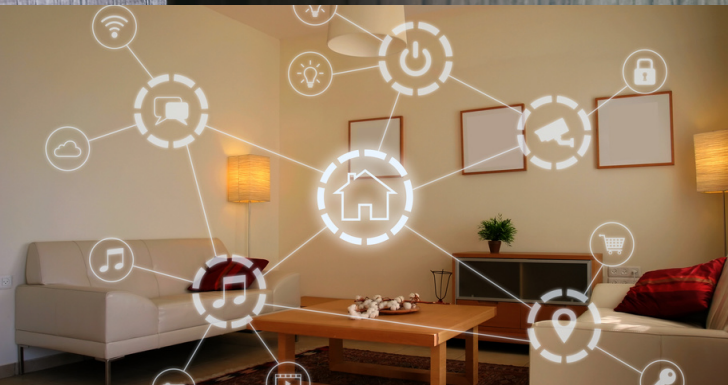


HARDWARE



HARDWARE





HARDWARE PRODUCTS

Automatic gates

Automatic Gates are cutting-edge security solutions designed for residential and commercial properties. They provide convenience and enhanced security by allowing remote or automated access control. These gates blend aesthetics with technology, offering a seamless and secure entry point while adding value to any property.

Electric Fence

Electric Fences are advanced perimeter security systems designed to deter unauthorized access and protect assets. They work by delivering non-lethal electric shocks to potential intruders upon contact. These high-tech fences offer an effective and safe security solution, safeguarding properties from trespassers while minimizing false alarms.

Biometric Attendance Machine

The Biometric Attendance Machine is a state-of-the-art workforce management tool that uses biometric verification, such as fingerprint or facial recognition, to accurately record employee attendance. This technology streamlines attendance tracking, eliminates time fraud, and enhances workplace efficiency by providing real-time data. It ensures precision and security, making it an indispensable tool for businesses seeking to optimize workforce management.

RFID Hotel Locks

RFID Hotel Locks are cutting-edge security systems tailored for the hospitality industry. They use RFID technology to provide secure and convenient access control for hotel guests. These locks enhance guest experiences by enabling keyless entry, while also improving security by allowing for easy card reprogramming and monitoring. RFID Hotel Locks offer a modern and efficient solution to elevate the safety and convenience of hotel stays.

Parking Solutions

Parking Solutions encompass a range of smart technologies and systems designed to streamline parking management and optimize space utilization. These solutions often include features like automated payment systems, real-time occupancy monitoring, and license plate recognition. They enhance the efficiency of parking facilities, reduce congestion, and offer a seamless experience to both operators and users, making urban parking more convenient and sustainable.

HARDWARE PRODUCTS

Smart Home

Smart Home is a modern residential setup equipped with interconnected devices and systems that can be controlled remotely or automatically. These devices, such as smart thermostats, lighting, and security cameras, provide convenience, energy efficiency, and enhanced security. A Smart Home transforms traditional living spaces into highly automated, efficient, and personalized environments, making everyday tasks easier and more enjoyable.

Fire Alarm System

A Fire Alarm System is a critical safety infrastructure that detects the presence of fire or smoke in buildings and alerts occupants to evacuate in case of emergencies. These systems use a network of sensors, alarms, and control panels to provide early warning and initiate firefighting measures. Fire Alarm Systems are essential for safeguarding lives and property, ensuring a rapid response to potential fire hazards, and minimizing the impact of fire incidents on safety and assets.

Turnstiles

Turnstiles are access control devices designed to regulate the flow of people entering or exiting a secured area, such as stadiums, transit stations, or office buildings. These mechanical or electronic barriers allow one person to pass at a time, enhancing security and ensuring authorized access. Turnstiles are a robust solution for crowd management and access control, providing an efficient way to monitor and restrict entry to designated areas while maintaining a steady flow of pedestrian traffic.

Networking Devices

Networking Devices are essential components of modern computer networks, facilitating data communication and connectivity. These devices include routers, switches, modems, and access points, enabling the efficient transfer of data between computers and other devices. Networking Devices play a crucial role in ensuring seamless internet access, data sharing, and efficient network management, serving as the backbone of today's interconnected world.

HARDWARE PRODUCTS

Data Centres

Data Centers are centralized facilities equipped with specialized infrastructure to store, manage, and process vast amounts of digital data and information. They serve as the backbone of modern technology, hosting servers, networking equipment, and storage systems. Data Centers ensure data availability, security, and scalability, enabling businesses to deliver reliable online services, cloud computing, and mission-critical applications to their users and clients. These facilities are essential in supporting the digital world's ever-growing demands for storage and computing resources.

Parking Sheds

Parking Sheds are structures designed to provide shelter and protection for vehicles, primarily automobiles. They are typically constructed using various materials such as steel, aluminum, or fabric. Parking Sheds offer a covered parking solution, shielding vehicles from adverse weather conditions like rain, sun, and snow. These structures are a practical addition to parking areas, enhancing the comfort and safety of parked vehicles while extending their lifespan by minimizing exposure to environmental elements.

CCTV Cameras

Closed-Circuit Television (CCTV) Cameras are surveillance devices that capture and record video footage in real-time or for later review. They are commonly used for security and monitoring purposes in various settings, including homes, businesses, public spaces, and institutions. CCTV cameras play a crucial role in enhancing safety, deterring criminal activity, and providing valuable visual evidence for investigations. These cameras come in a range of types and capabilities, allowing for versatile surveillance solutions tailored to specific needs and environments.

SOFTWARE



SF TRACKS



PARKING PRO MANAGEMENT SYSTEM



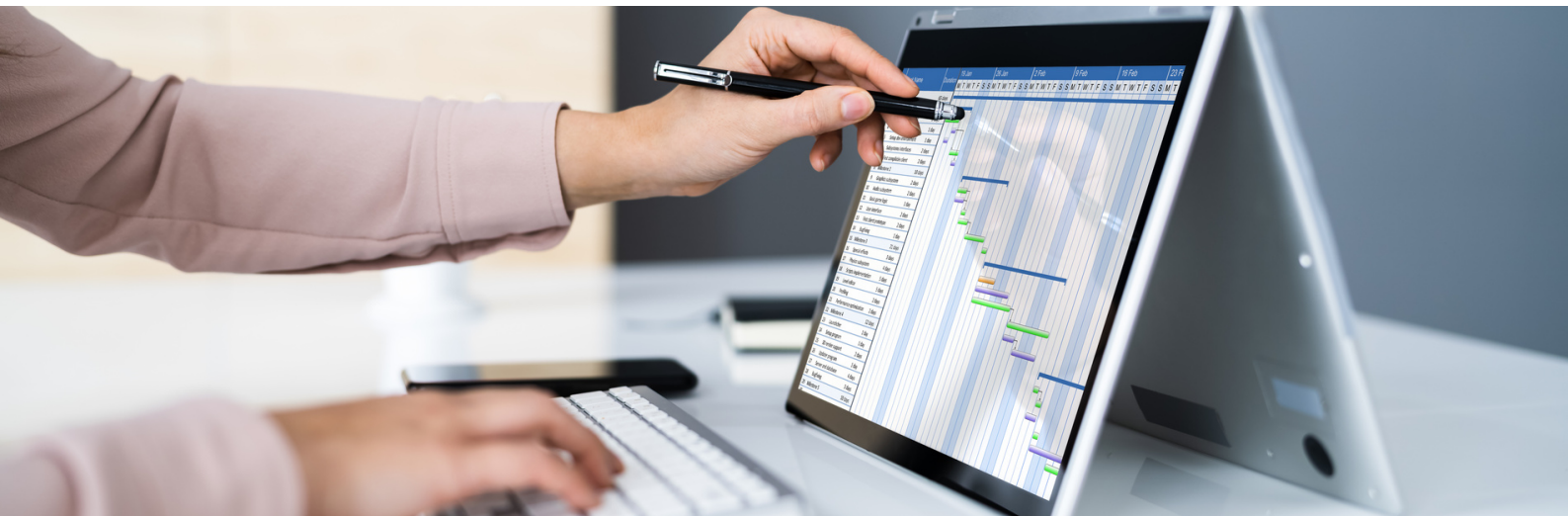
RESTRAUNT MANAGEMENT SYSTEM



VISITING INFORMATION SYSTEM



HR AND PAYROLL SYSTEM



PATIENT MANAGEMENT SYSTEM



EMPLOYEE TRACKING SYSTEM



POINT OF SALE SOTWARE



HUMAN RESOURCE MANAGEMENT SYSTEM

OUR SOFTWARE

SF Tracks

SF Tracks is a sophisticated software solution designed for supply chain and logistics management. It offers real-time tracking and monitoring of shipments, optimizing routes, minimizing delays, and enhancing overall operational efficiency. With SF Tracks, businesses gain precise visibility into their logistics processes, ensuring timely deliveries and streamlined supply chain operations

Parking Software

Parking Software is a comprehensive solution that simplifies the management of parking facilities, both for operators and users. It includes features like automated payment processing, real-time space availability tracking, and reservation management. This software enhances the overall parking experience, reducing congestion, improving space utilization, and providing convenient options for drivers while optimizing revenue for parking facility operators

Restaurant Management System

A Restaurant Management System is an all-in-one software solution tailored for the foodservice industry. It streamlines restaurant operations by managing reservations, orders, inventory, employee schedules, and customer data. This system enhances efficiency, customer service, and profitability, making it an invaluable tool for restaurant owners to ensure smooth day-to-day operations and an exceptional dining experience.

OUR SOFTWARE

Visitor Information System

A Visitor Information System is a software solution designed to streamline the management of visitors and guests in various environments, including offices, educational institutions, and public facilities. It enables efficient visitor registration, badge printing, and tracking, enhancing security and providing a seamless experience for both visitors and hosts. This system ensures that visitor data is accurately recorded and accessible, improving overall security and visitor management.

HR and Payroll System

An HR and Payroll System is a comprehensive software solution for managing human resources and payroll processes within organizations. It automates tasks such as employee data management, attendance tracking, payroll calculations, and tax compliance. This system streamlines HR operations, ensuring accurate payroll processing, compliance with labor laws, and efficient management of personnel data, ultimately enhancing workforce management and HR efficiency.

Patient Management System

A Patient Management System is a robust software solution designed for healthcare facilities to streamline patient data management, appointments, and medical records. It centralizes patient information, making it easily accessible to healthcare providers, improving diagnosis, and enhancing patient care. This system ensures efficient patient scheduling, billing, and electronic health record management, ultimately optimizing healthcare delivery and patient outcomes.

OUR SOFTWARE

Point of Sale Software

Point of Sale (POS) Software is a versatile tool used by retailers and businesses to streamline sales transactions and inventory management. It allows for efficient payment processing, inventory tracking, and customer data management. This software enhances the overall retail experience, providing quick and accurate checkouts while helping businesses optimize stock levels and improve customer satisfaction.

Employee Tracking System

An Employee Tracking System is a software solution that aids organizations in monitoring and managing employee activities, work hours, and productivity. It helps automate attendance tracking, project management, and task assignments, ensuring efficient workforce management. This system enhances accountability, optimizes resource allocation, and promotes transparency in employee performance, contributing to improved productivity and project management.

Human Resource Management System

A Human Resource Management System (HRMS) is a comprehensive software solution that centralizes and automates various HR functions, including employee data management, recruitment, performance evaluation, benefits administration, and payroll processing. This system streamlines HR operations, ensuring efficient personnel management, compliance with labor regulations, and enhanced employee engagement. An HRMS simplifies HR tasks, allowing organizations to focus on strategic workforce planning and employee development.

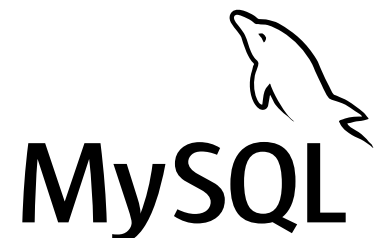
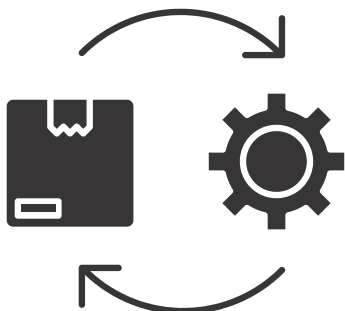
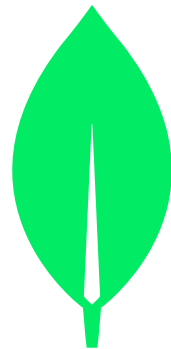
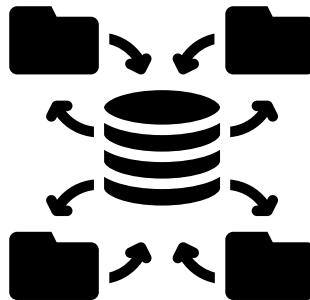
OUR SOFTWARE

Inventory Management System

An Inventory Management System is a software solution used by businesses to efficiently track, manage, and optimize their inventory levels. It enables real-time monitoring of stock levels, automates order processes, and provides valuable insights into inventory turnover and demand forecasting. This system enhances operational efficiency by reducing stockouts, minimizing excess inventory, and improving supply chain management, ultimately ensuring that businesses have the right products available at the right time to meet customer demands.

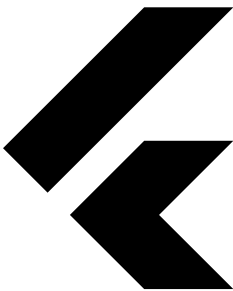
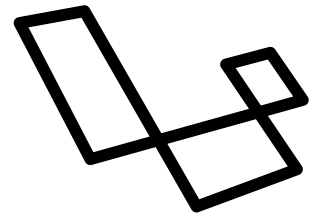
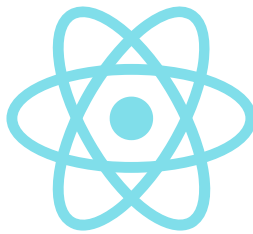
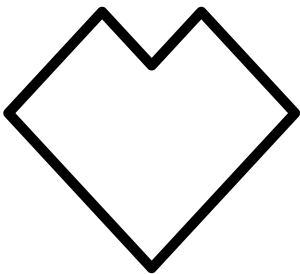
DATABASE EXPERTISE

AT MMB TECHNOLOGIES, WE POSSESS A WEALTH OF EXPERIENCE IN MANAGING A DIVERSE ARRAY OF DATABASES, ENSURING OPTIMAL DATA STORAGE AND RETRIEVAL SOLUTIONS. OUR EXPERTISE EXTENDS TO THE FOLLOWING DATABASE MANAGEMENT SYSTEMS:



SOFTWARE TECHNOLOGIES

AT MMB TECHNOLOGIES, WE ARE AT THE FOREFRONT OF SOFTWARE INNOVATION, SPECIALIZING IN A DIVERSE RANGE OF CUTTING-EDGE TECHNOLOGIES. OUR AREAS OF EXPERTISE ENCOMPASS:



.NET



BUSINESS MODEL

MMB Technologies monetizes its operations through product sales, subscription services, and consulting/customization fees. Our customer base spans enterprises, SMEs, government agencies, and educational institutions, and we reach them through direct sales, online platforms, and strategic partnerships. Our flexible fee structure encompasses tiered product pricing, subscription models, and project-specific consulting/customization fees, allowing us to generate revenue while accommodating diverse client needs and ensuring our financial sustainability.



COMPETITIVE ADVANTAGE

1. **Innovation Leadership:** We consistently stay ahead of the technological curve, pioneering innovative solutions that set industry standards and offer our clients a competitive edge.
2. **Cross-Disciplinary Expertise:** Our team's diverse skill sets, ranging from software and hardware development to AI and UX/UI design, enable us to provide comprehensive, end-to-end solutions under one roof.
3. **Customization and Scalability:** We tailor our products and services to meet each client's specific needs, ensuring scalability as their businesses grow and evolve.
4. **Proven Track Record:** Years of successful project deliveries and client satisfaction have built trust in our ability to execute complex assignments efficiently.
5. **Collaborative Partnerships:** We foster collaborative relationships with clients, involving them closely in the development process to ensure alignment with their goals.
6. **Ethical and Responsible Practices:** Our commitment to ethical conduct, data privacy, and sustainability resonates with clients seeking socially responsible technology solutions.
7. **Agility and Adaptability:** We can pivot swiftly to address market changes and emerging trends, helping clients stay relevant and responsive in dynamic industries.
8. **Global Reach:** Our presence and partnerships span across borders, allowing us to serve clients on a global scale and tap into diverse perspectives and markets.
9. **Client-Centric Approach:** We prioritize client satisfaction, offering dedicated customer support and post-project maintenance to ensure long-term success.
10. **Cost-Efficiency:** Our efficient project management practices help clients maximize their ROI while delivering high-quality solutions.

These competitive advantages position MMB Technologies as a trusted partner for businesses seeking technological innovation and excellence.



WHERE INNOVATION MEETS SUCCESS!

OUR TEAM IS OUTSTANDING



SHORT STORY ABOUT SUPER TEAM

Our Team:

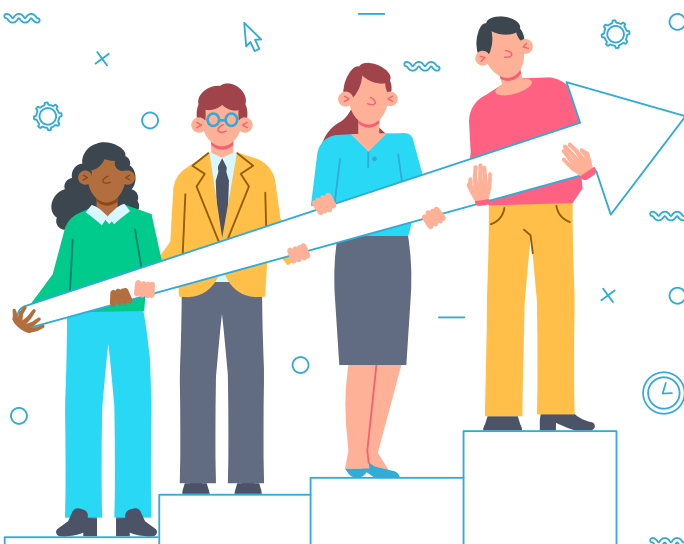
At MMB Technologies, our team comprises seasoned professionals with diverse expertise in software and hardware solutions. From our CEO's visionary leadership to our dedicated engineers and designers, we're united by a shared passion for technology and innovation.

Our Expertise:

We specialize in crafting cutting-edge software and hardware solutions, providing IoT development, AI integration, and top-notch UX/UI design services. Our experience ensures that we deliver customized solutions that meet the unique needs of our clients.

What Sets Us Apart:

What truly sets us apart is our commitment to excellence and the strong sense of camaraderie within our team. We believe that personal connections foster creativity, and our dedication to our clients' success drives every project we undertake.



WHERE INNOVATION MEETS SUCCESS!

OUR CLIENTS



OUR CLIENTS



THANK YOU



BECAUSE, WE'RE HERE TO HELP

In the future, we envision MMB TECHNOLOGIES as a beacon of technological innovation and excellence. We're grateful for the support of our team and stakeholders and invite continued collaboration to reach our shared goals. Together, we'll propel MMB TECHNOLOGIES to new heights.



ADDRESS

Office# 204 Ashrafi Heights Main Market
Gulberg ,Lahore.



TELEPHONE

+92 (42) 35786 020 ,
+92 (321) 9885461



WEBSITE

www.mmbtechnologies.com



WHERE INNOVATION MEETS SUCCESS!